



THE ARCHBISHOP'S SCHOOL
CANTERBURY



Environmental Improvement Works 2021

Helping to Make Our School Greener
And To Become Carbon Neutral by 2030

ROOF REPLACEMENT WORKS

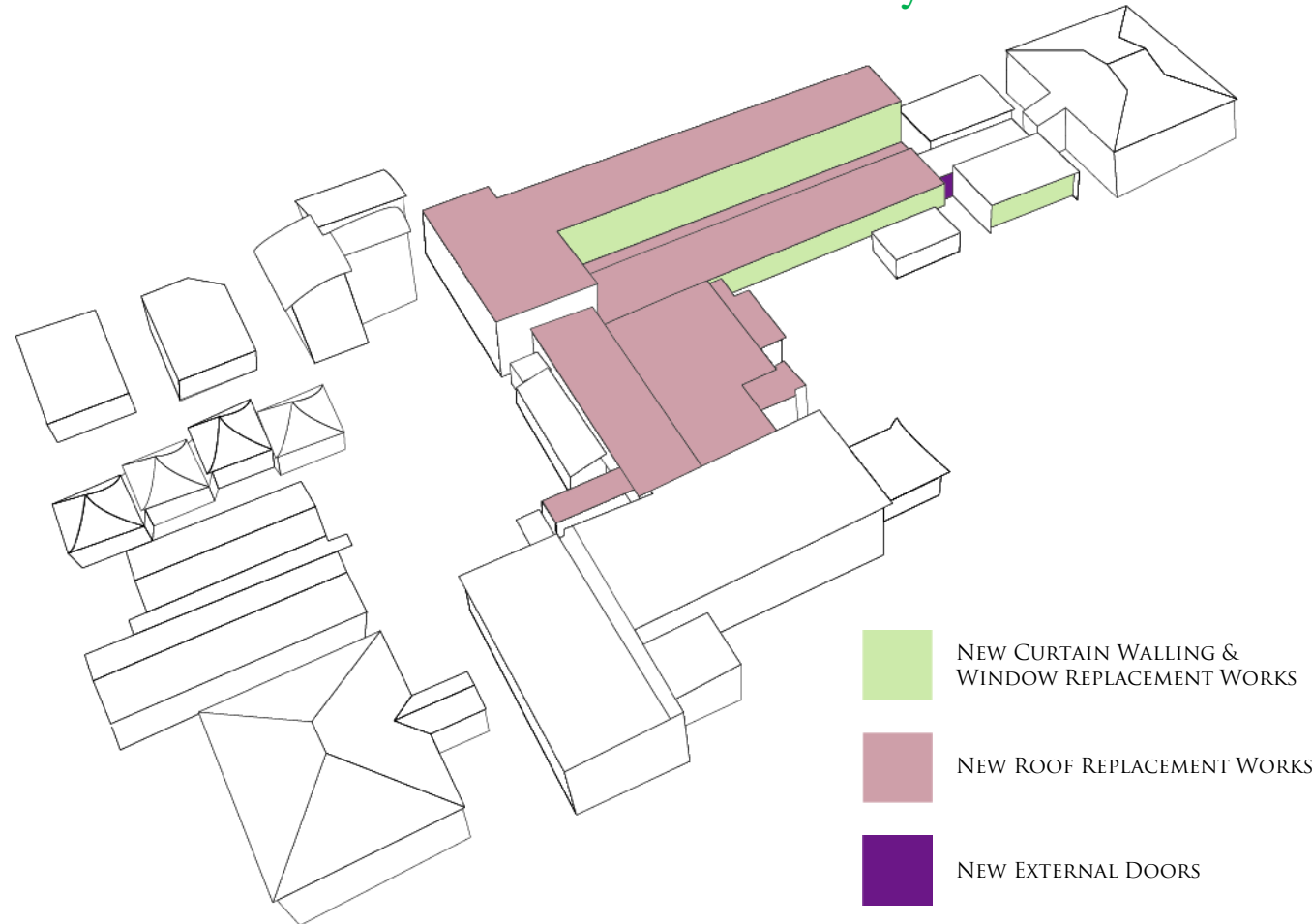
CONTINUATION OF ROOF REPLACEMENT WORKS WITH HIGH PERFORMANCE COVERINGS AND INSULATION. THE NEW INSULATED ROOFS WILL HELP MAKE OUR SCHOOL WARM & COMFORTABLE. THE HEAT RETENTION & LOWER ENERGY USE WILL RESULT IN REDUCED HEATING BILLS

HEATING REPLACEMENT WORKS

FOLLOWING THE INSTALLATION OF NEW BOILERS IN 2019 WE ARE NOW REPLACING THE OLD INEFFICIENT RADIATORS & PIPEWORK TO ENSURE OUR CLASSROOMS ARE WARM THROUGHOUT THE WINTER MONTHS. THE NEW RADIATORS & PIPEWORK WILL BE 50% MORE EFFICIENT, ALSO LEADING TO REDUCED ENERGY BILLS.

NEW PLAYGROUND & MUSTER POINT

WE ARE ALSO CURRENTLY AWAITING PLANNING APPROVAL TO SUPPLY & LAY A NEW ARTIFICIAL GRASS PLAYGROUND ON THE EXISTING PLAYING FIELDS, WHICH WILL ALSO BE USED AS A MEETING POINT IN THE EVENT OF A FIRE.



CURTAIN WALLING, WINDOW & DOOR REPLACEMENTS

PHASE 1 IS CURRENTLY UNDERWAY TO REMOVE THE EXISTING SINGLE-GLAZED METAL WINDOWS WITH NEW DOUBLE-GLAZED, LOW-MAINTENANCE STEEL WINDOWS & DOORS. THE WINDOWS ARE HIGHLY EFFICIENT REDUCING HEAT LOSS & GAIN BY 30% COMPARED TO THE SINGLE-GLAZED WINDOWS.

ALTERATIONS TO FRONT ENTRANCE

WE HAVE EXTENDED THE LANDING & STEPS TO PROVIDE A NEW LOW-RISE PLATFORM LIFT TO ENSURE THERE IS SAFE ACCESS FOR ALL STUDENTS, STAFF & VISITORS.

LIGHTING

WE HAVE RECENTLY COMPLETED A PROGRAMME TO REPLACE ALL LIGHTING WITHIN THE SCHOOL WITH NEW ENERGY EFFICIENT LED LUMINAIRES, WHICH HAVE A LONGER LIFESPAN & ARE 100% RECYCLABLE, NEW LED LIGHT FITTINGS TYPICALLY CONSUME AROUND ONE QUARTER OF THE ELECTRICITY USED BY A FLUORESCENT LIGHT.